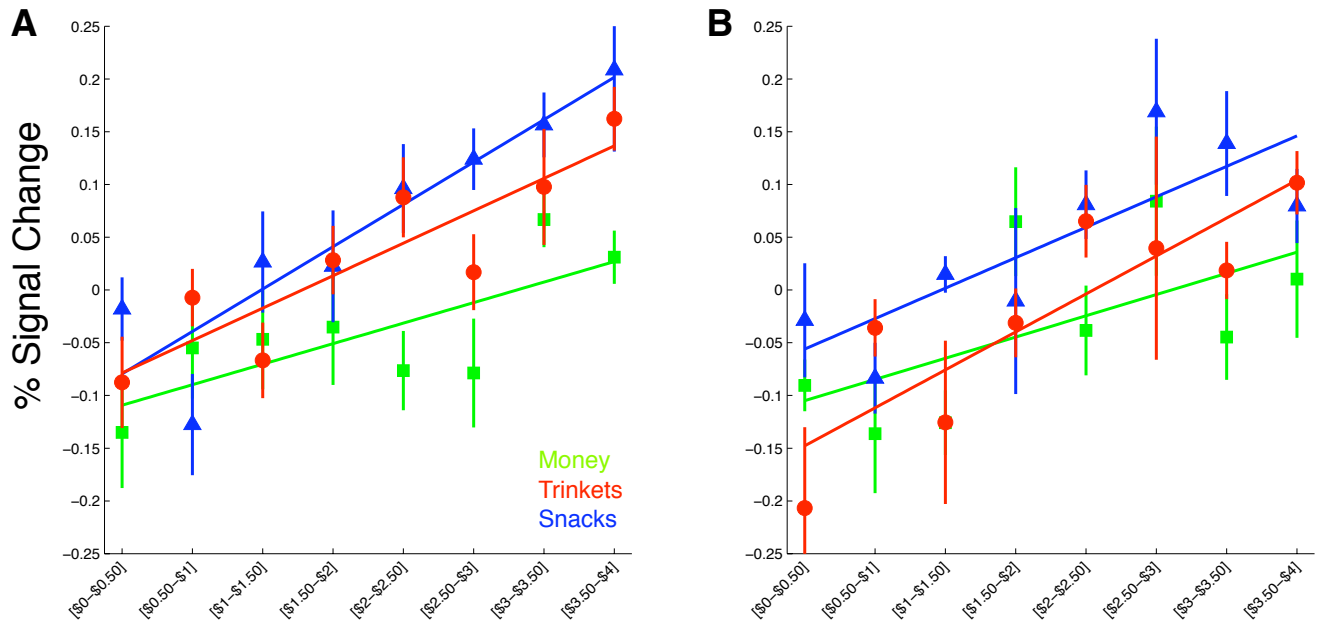


SUPPLEMENTAL MATERIAL



Supplementary Figure 1: Average percent signal change across the full range of decision values. To generate these plots a leave one out approach was used as follows: a random effects analysis was computed for $n-1$ subjects to determine coordinates of peak activity. These peak coordinates were used to extract the percent signal change for each level of decision value (in units of 0.50 cent from 0 to \$4) for the n th subject. This method was repeated for each subject, and the extracted % signal change data averaged across subjects, separately for Experiment 1 and Experiment 2. In this way the resulting averaged percent signal change plots shown are independent from the peaks used to define them. **A.** Plot of peak % signal change from subjects in Experiment 1, separately for each item type. **B.** Plot of peak % signal change from subjects in Experiment 2 separately for each item type.